

DIAMOND

Fiber Optic Components

NETWORK ACCESSORIES

The Diamond Multipurpose Adapter System (MAS) is our next generation of modular interchangeable adapters based on 2.5 mm diameter ferrule whose size, ease of cleaning and inspection, and optical performance make it an ideal choice for high performance applications such as test and measurement equipment.

This system is composed of a flange which provides an internal connection via a FC or Mini-AVIM style connector and a wide range of interchangeable adaptors including E-2000™, FC, SC, ST™, DIN, and F-3000™ (a LC std compatible connector). The end-face of the internal connector is quickly and easily accessed for cleaning and inspection purposes by removing the external adaptor housing.

The MAS is suitable for SM (PC & APC versions) and MM applications.

FEATURES AND BENEFITS

- ▶ Compact footprint (14 x 15mm)
Supports high density / small device applications
- ▶ High precision metal construction
Long service life and high repeatability of IL values
- ▶ Protruded ferrule of internal connector
Easy access for cleaning and inspection
- ▶ Positive latching mechanism
High coupling reliability
- ▶ One-touch locking mechanism
Easy of operation
- ▶ Excellent optical performance (SM & MM)

APPLICATIONS

- ▶ Test and measurement equipment
- ▶ Modular high optical power systems
- ▶ Bench flexible hybrid adapter measurement

SPECIFICATIONS

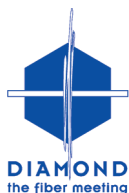
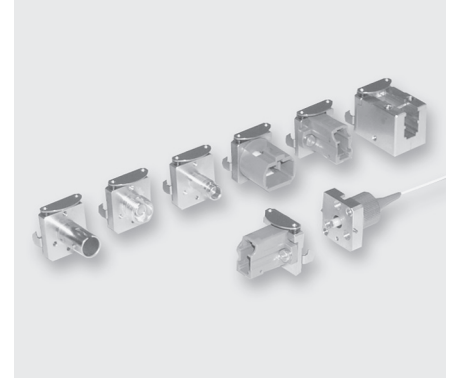
	MULTIMODE 0° PC	SINGLE MODE 0° PC	SINGLE MODE 8° APC	UNITS	TEST CONDITIONS
Insertion Loss (IL)*		max 0.25		dB	IEC 61300-3-4; $\lambda = 1300/1550\text{nm}$
Repeatability of IL*		max ± 0.15		dB	IEC 61300-2-2; $\lambda = 1300/1550\text{nm}$
Service life (adapters)		500 mating cycles			
Service life (connectors)		1000 mating cycles			
Operating temperature		-25/+70		°C	

* Measured using two reference connectors. Valid for ferrule type 2.5 mm diameter. For other types, please contact your local DIAMOND representative

MAS

(Multipurpose Adapter System)

SINGLE MODE PC /APC
MULTIMODE PC



DIAMOND SA • Via dei Patrizi 5 • CH-6616 Losone • Switzerland
Tel. +41 91 785 45 45 • Fax +41 91 785 45 00 • e-mail info@diamond-fo.com

www.diamond-fo.com

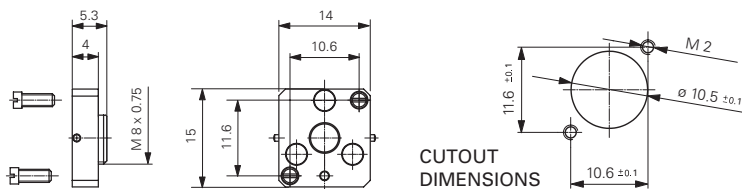
*Specifications subject to change
without notice*

BDD 1950277 07_14

TYPES AND DIMENSIONS

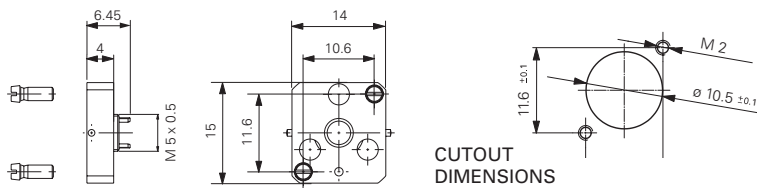
MAS Universal Flange (FC interface)

External parts: Metal
 Mating sleeve: None



MAS Universal Flange (Mini-AVIM interface)

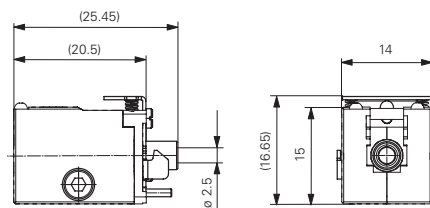
External parts: Metal
 Mating sleeve: None



ADAPTERS

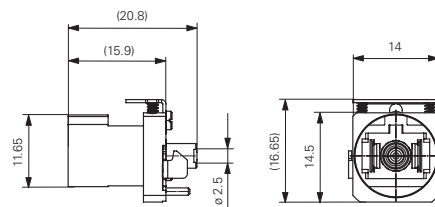
MAS E-2000™

External parts: Metal
 Mating sleeve: Zirconia



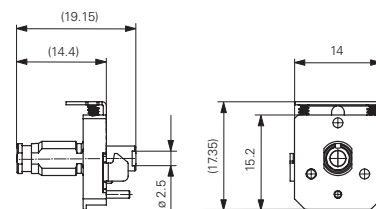
MAS SC

External parts: Metal/Plastic
 Mating sleeve: Zirconia



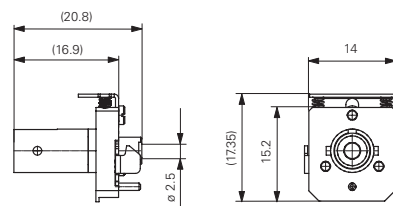
MAS DIN

External parts: Metal
 Mating sleeve: Zirconia



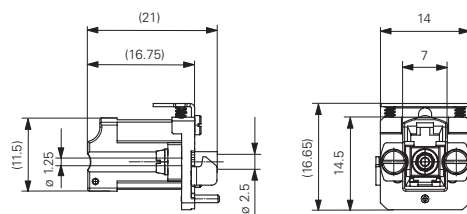
MAS ST™

External parts: Metal
 Mating sleeve: Zirconia



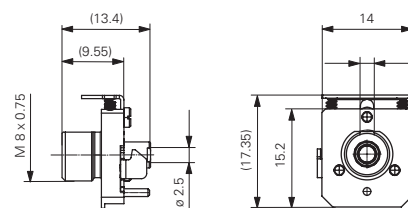
MAS LC (F-3000™)

External parts: Metal/Plastic
 Mating sleeve: Zirconia



MAS FC

External parts: Metal
 Mating sleeve: Zirconia
 Key: Narrow/Wide



ORDER INFORMATION

Please refer to the part numbers provided in the separate P/N list.
 For other configurations, please contact your nearest local Diamond representative or fill in the contact form available on the www.diamond-fo.com website.

Other versions available upon request